

crystallina

satis

siginna

asboloplintha ♂

baxteri

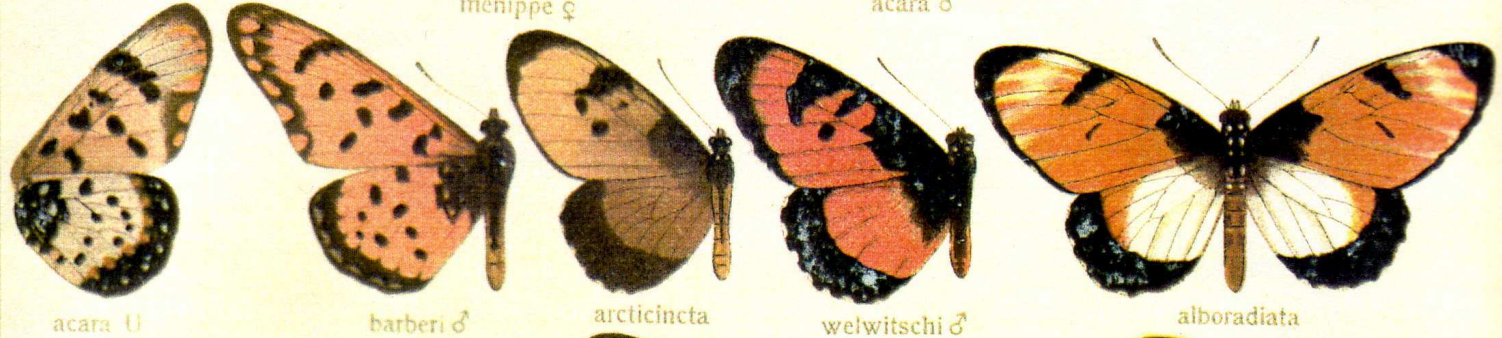


menippe ♂ U

menippe ♀

acara ♂

acara ♀



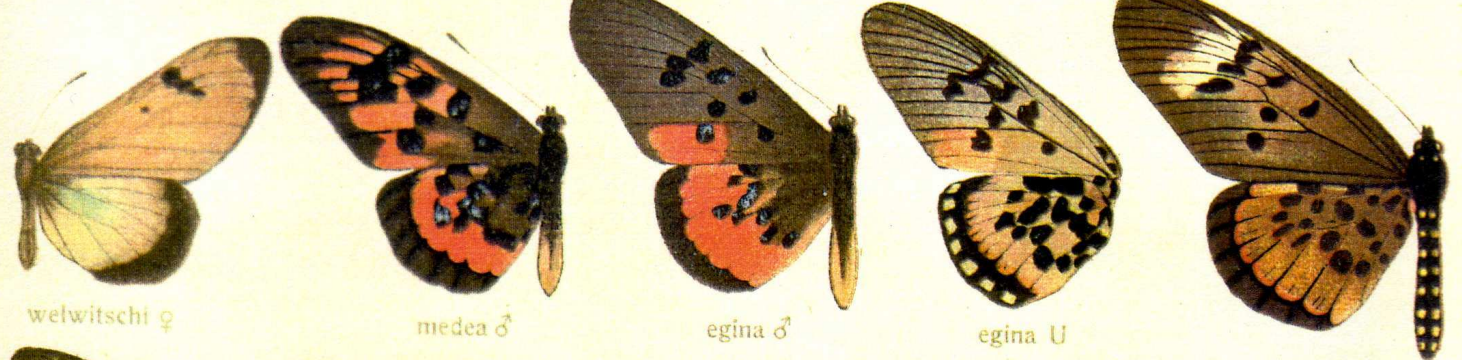
acara U

barberi ♂

arcticincta

welwitschi ♂

alboradiata



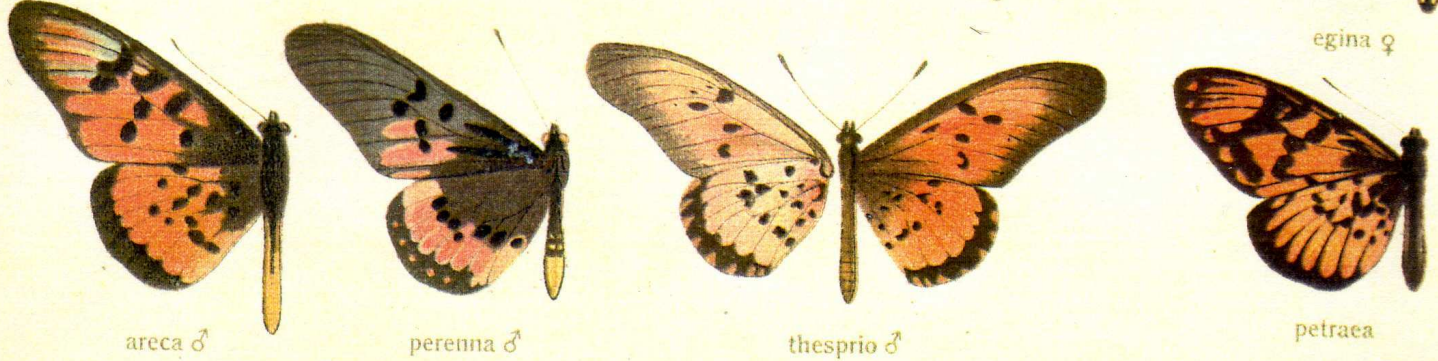
welwitschi ♀

medea ♂

egina ♂

egina U

egina ♀

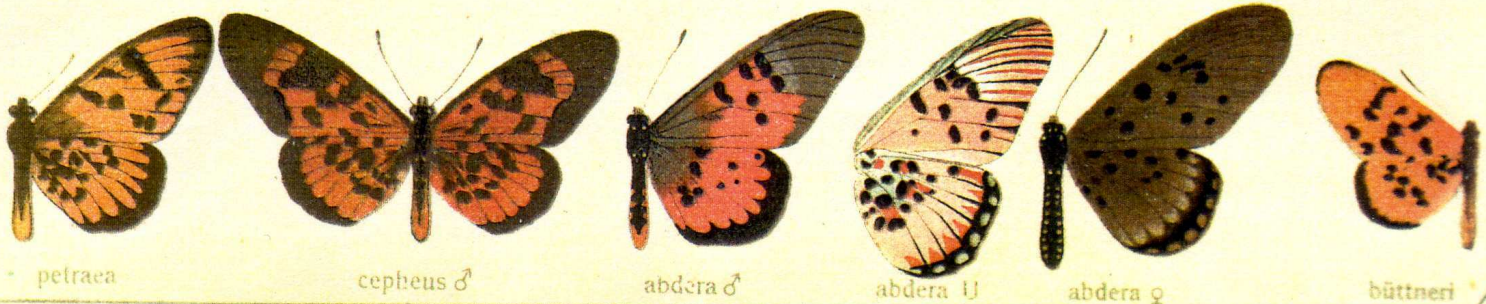


areca ♂

perenna ♂

thesprio ♂

petraea



petraea

cephus ♂

abdera ♂

abdera U

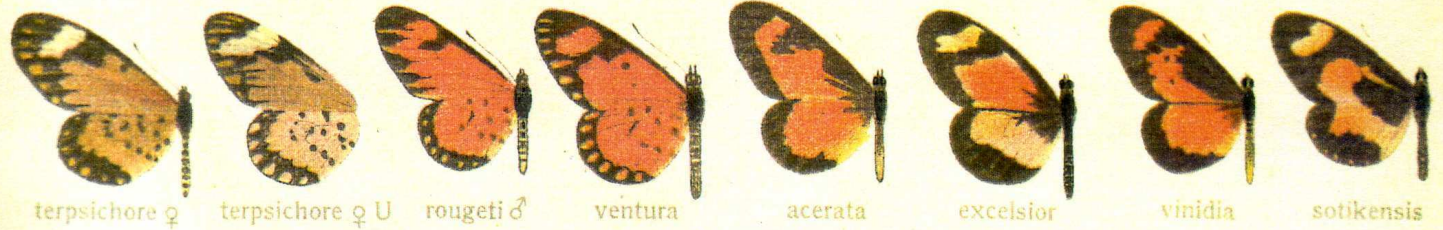
abdera ♀

büttneri





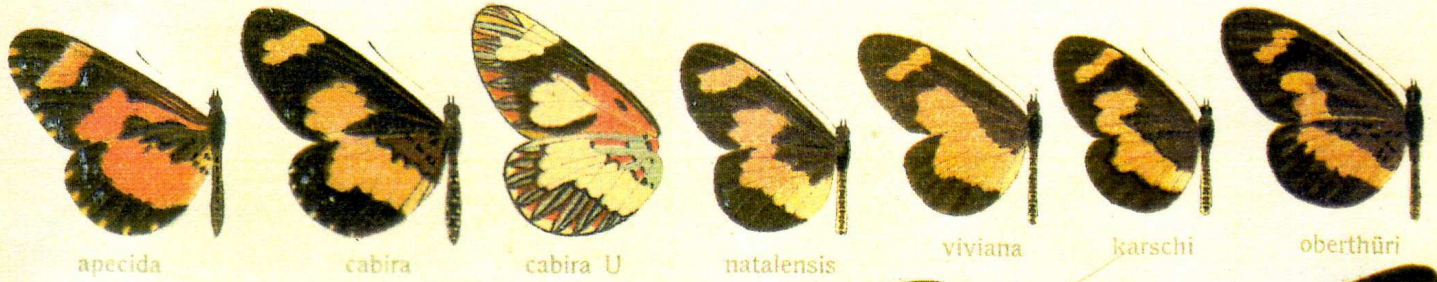
a



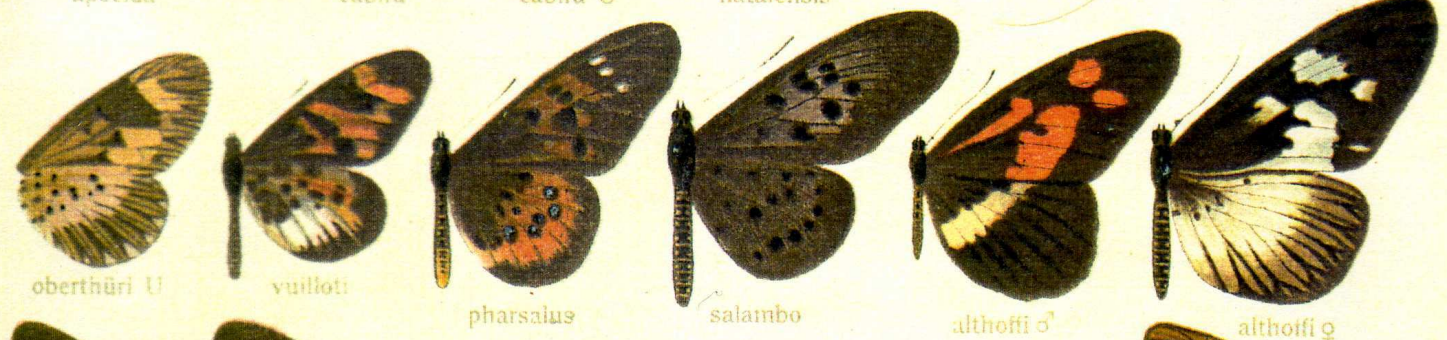
b



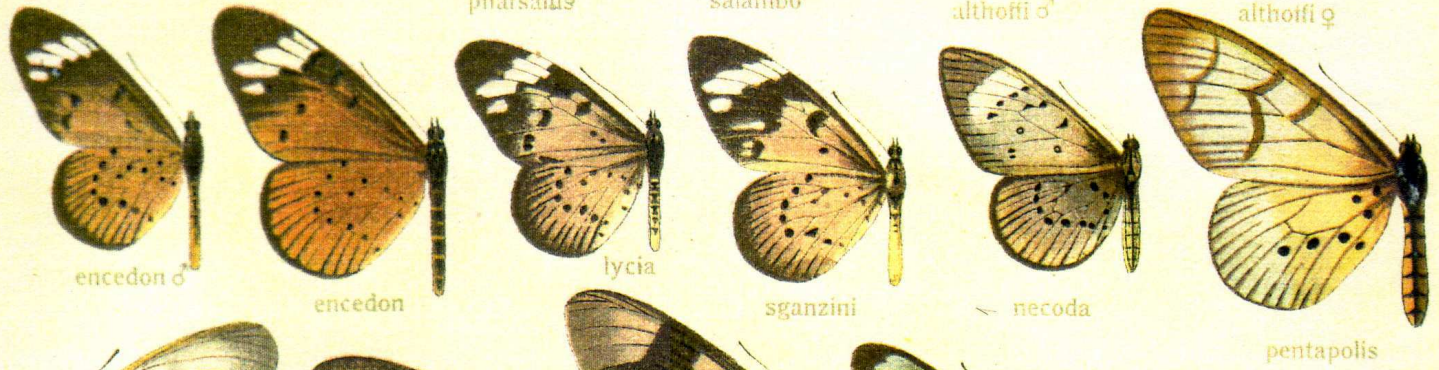
c



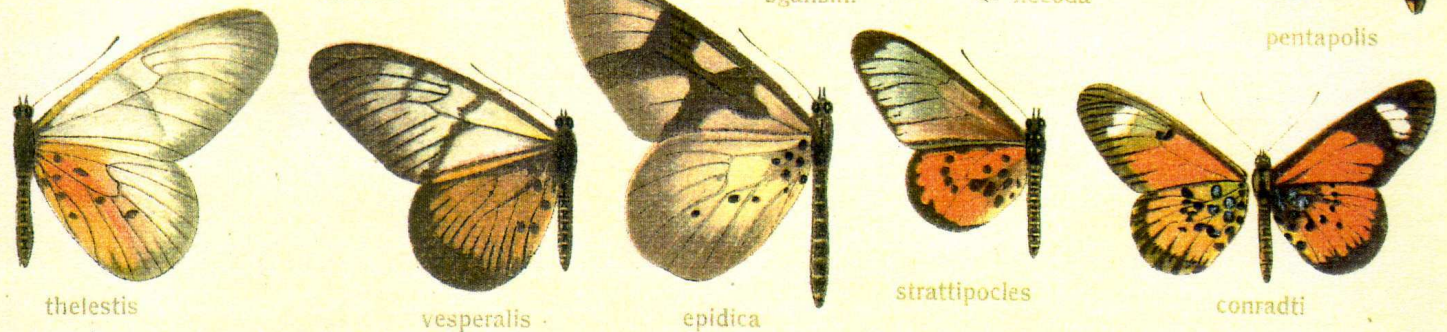
d



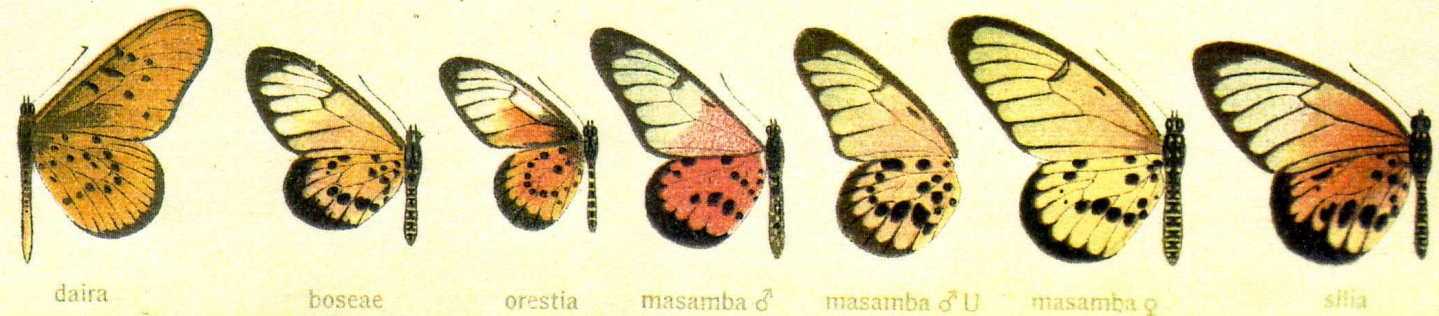
e



f

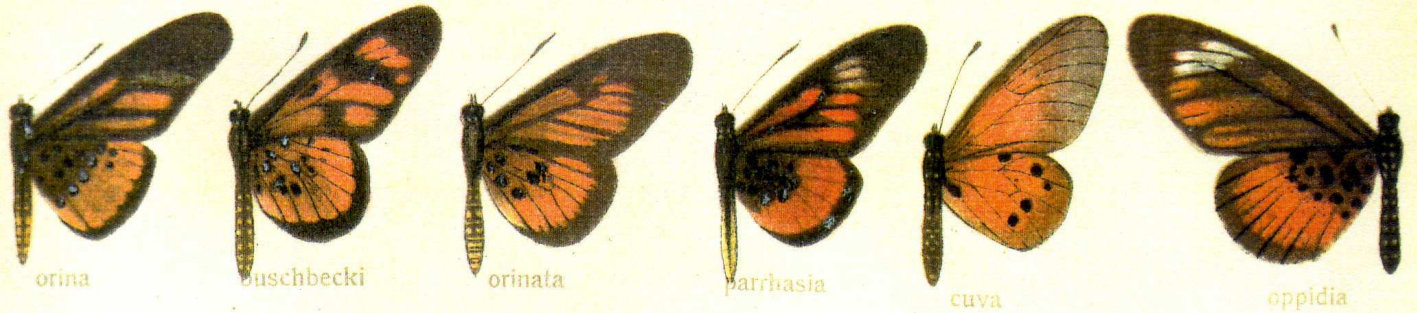


g

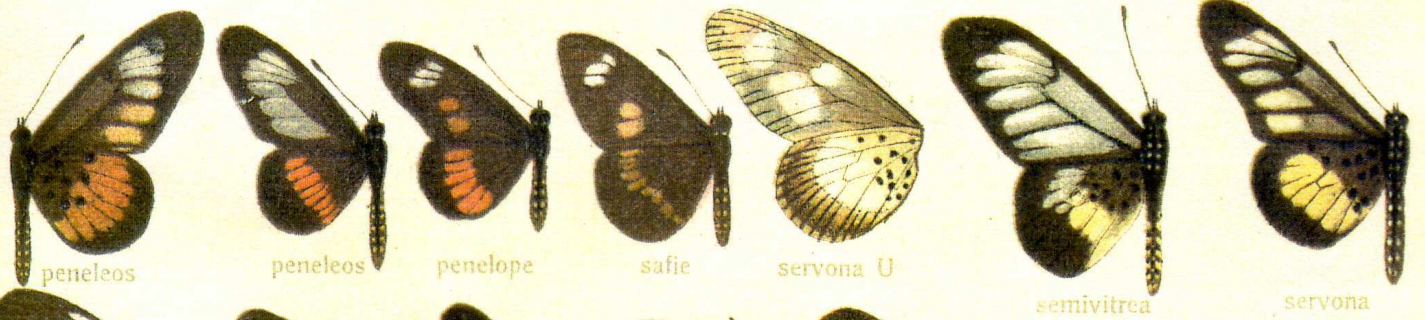


B

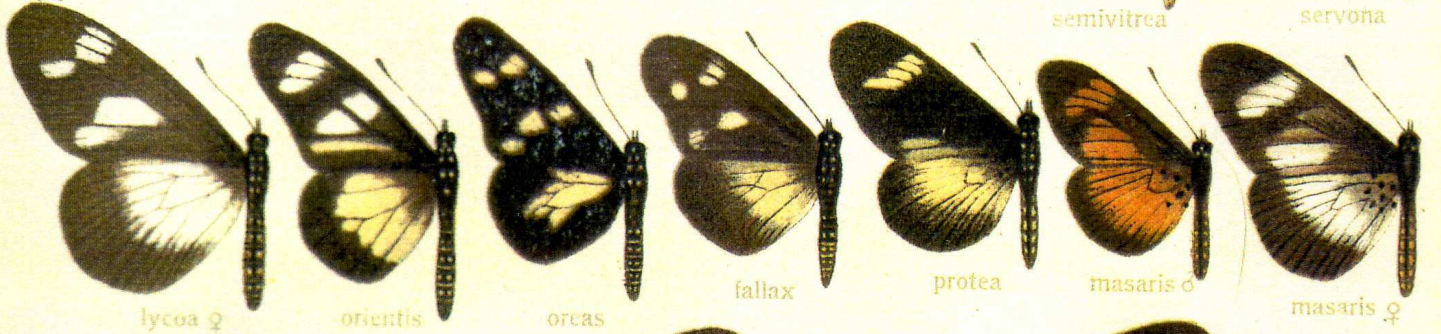
a



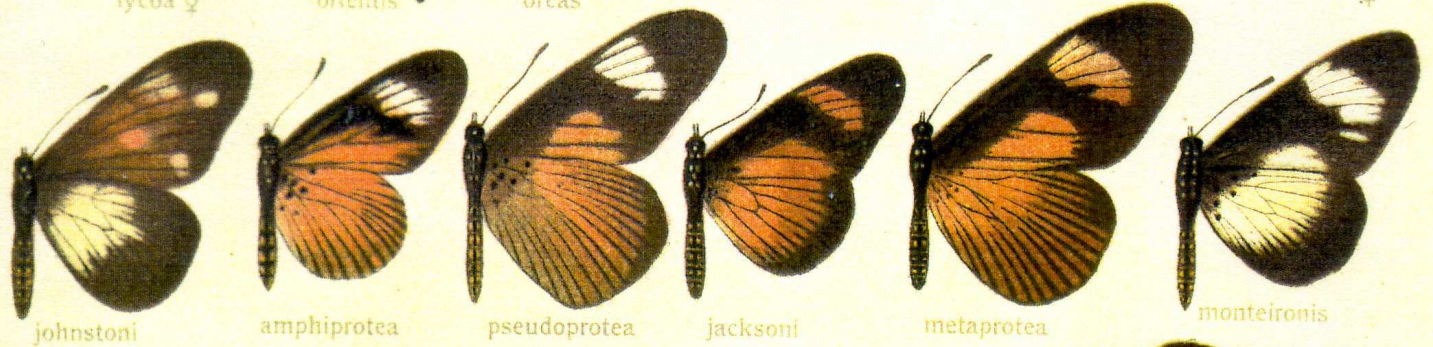
b



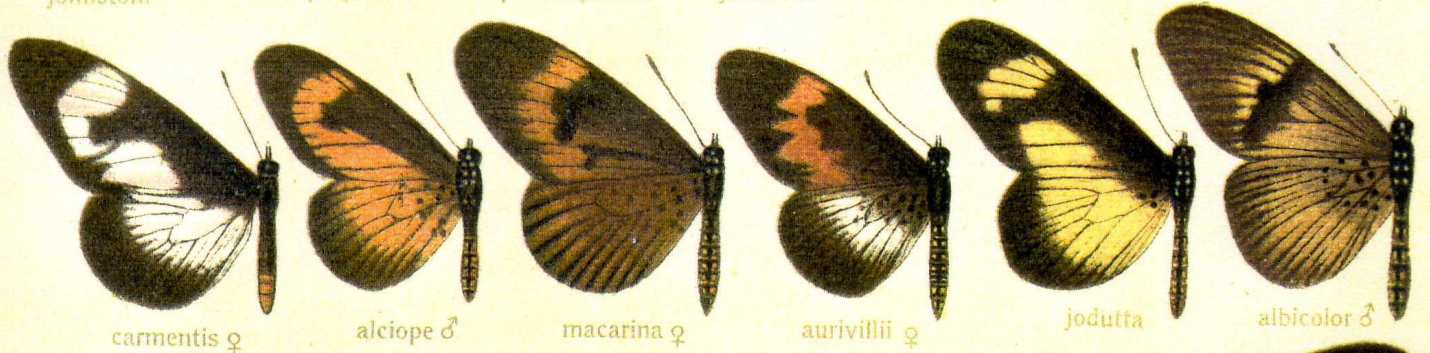
c



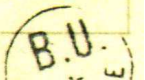
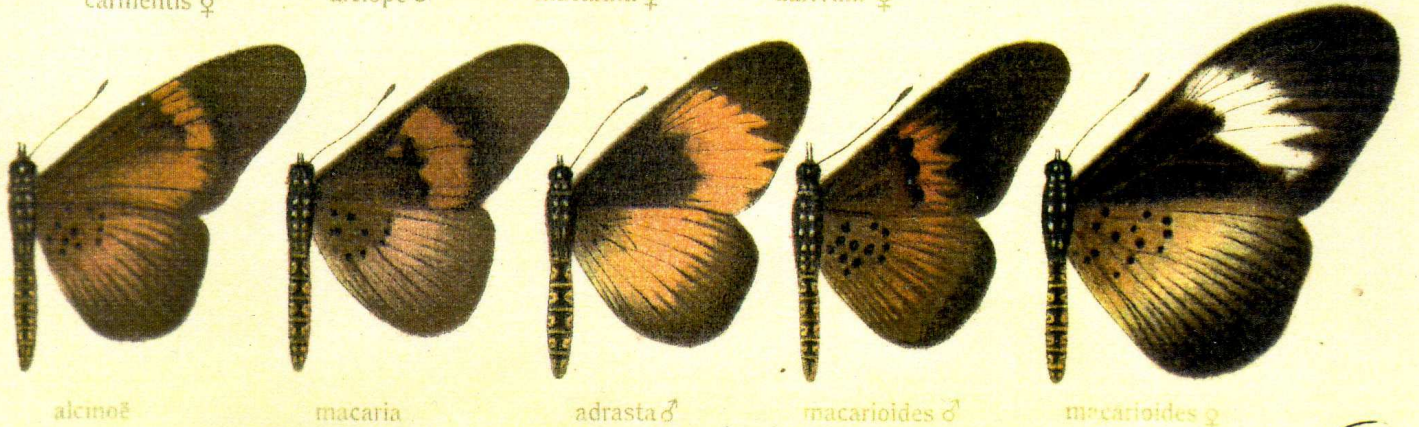
d



e

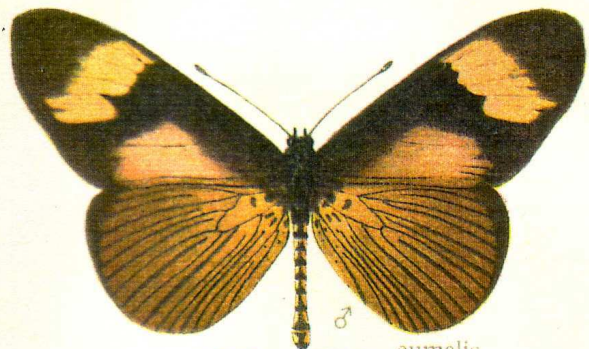


f

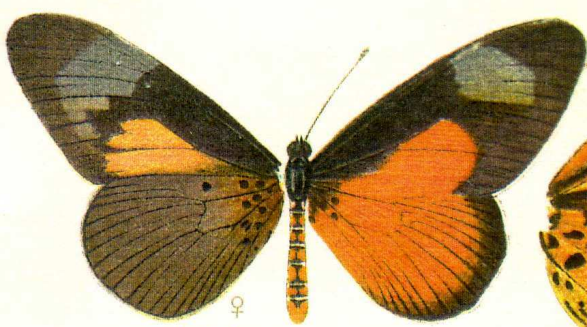




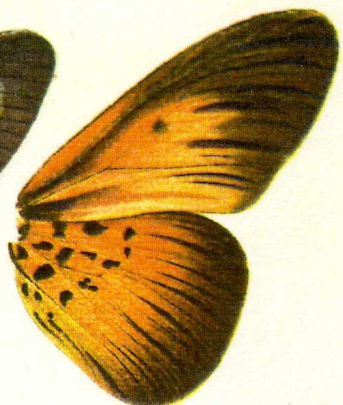
a



eumelis ♂

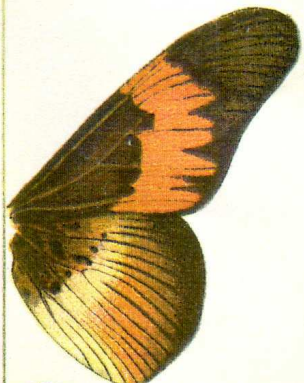


castanea ♀

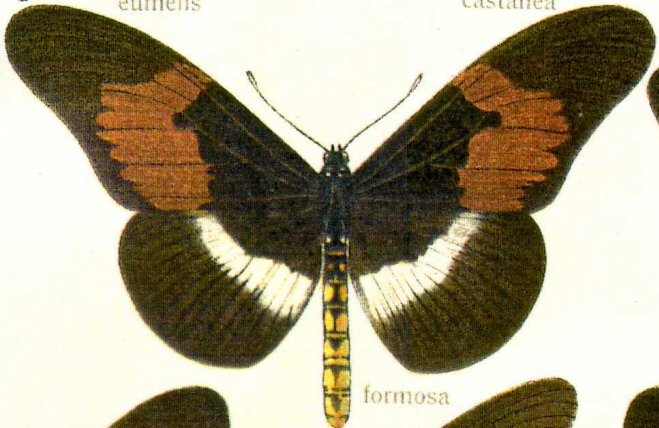


stavelia U

b



angulata U

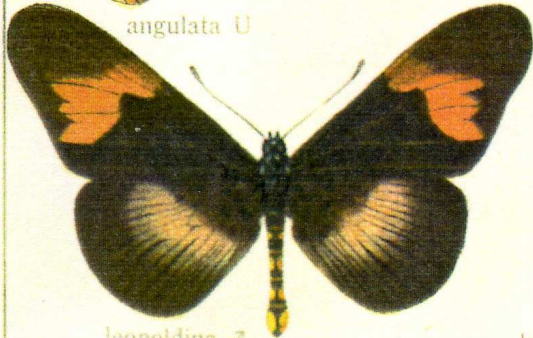


formosa



macarista ♂

c



leopoldina ♂



latefasciata U

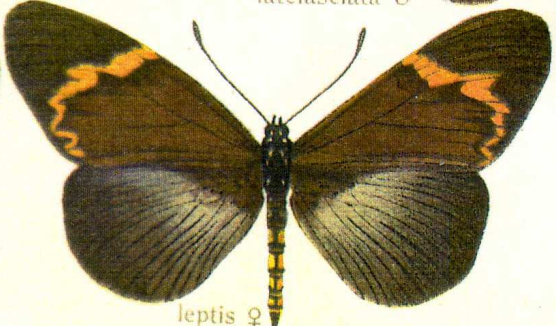


paragea ♀

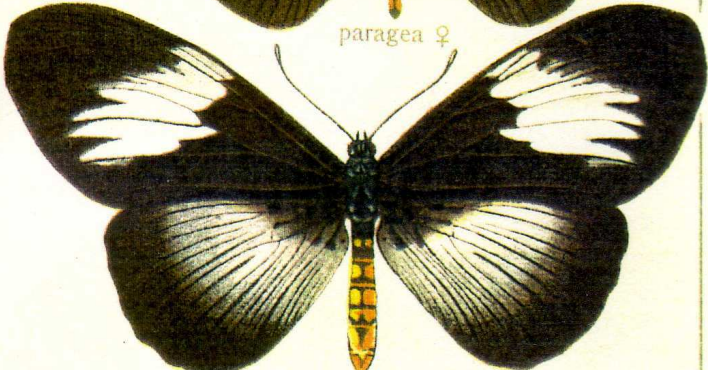
d



inaureata

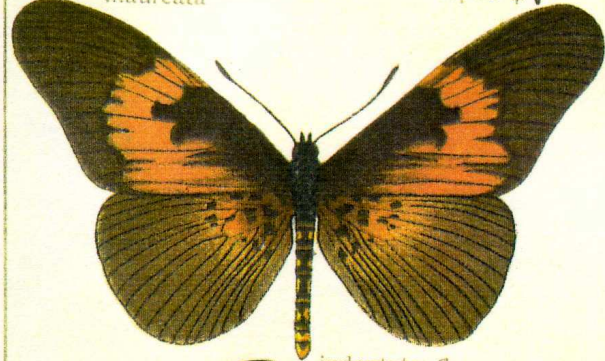


leptis ♀



macarista ♀

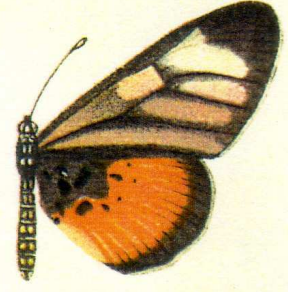
e



indentata ♂

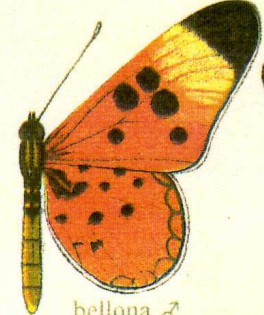


homocnroa ♀

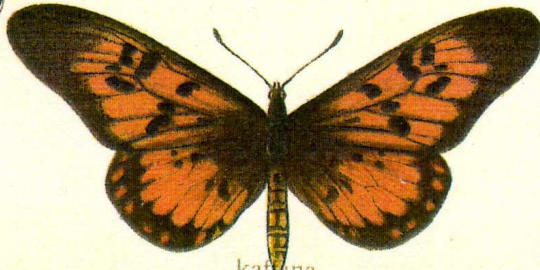


parrhasia

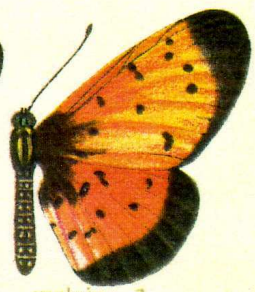
f



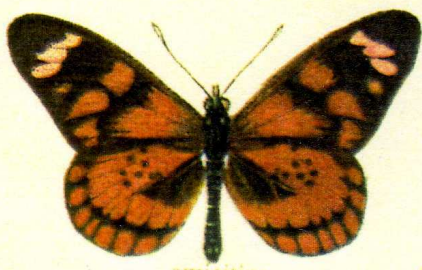
bellona ♂



kalvina

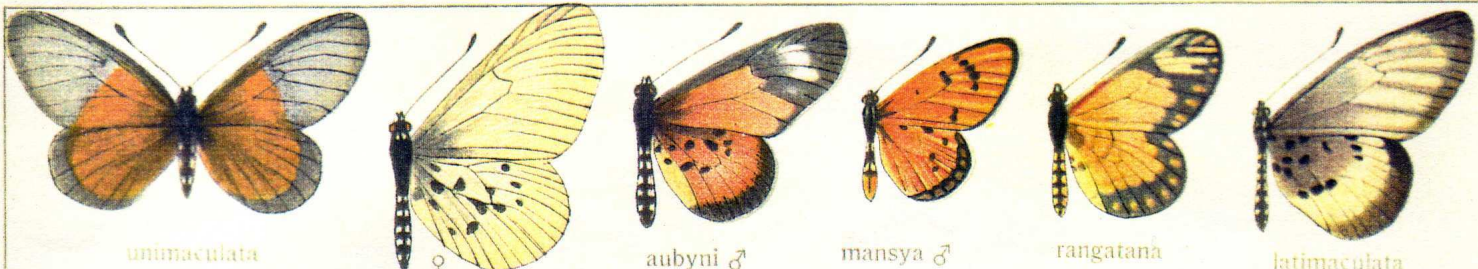


melaina ♂

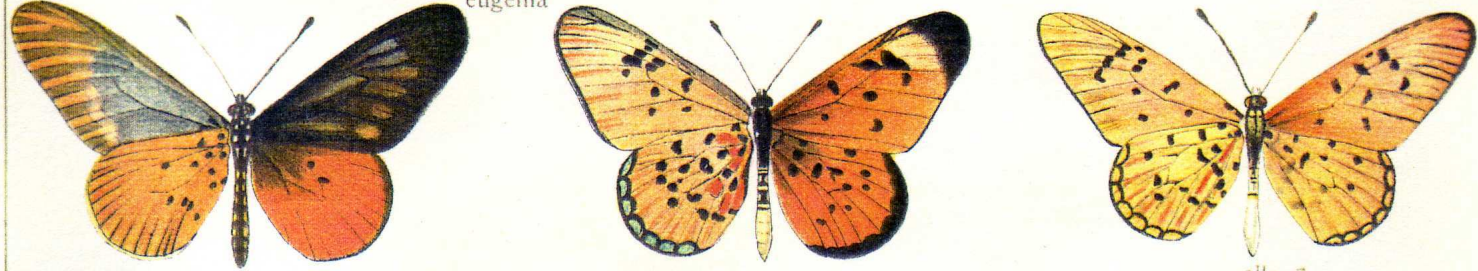


amicitiae

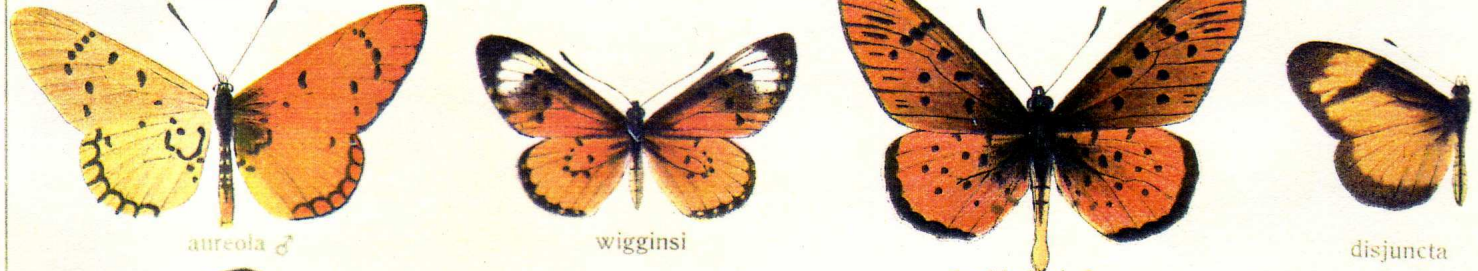
a
b
c
d
e
f
g



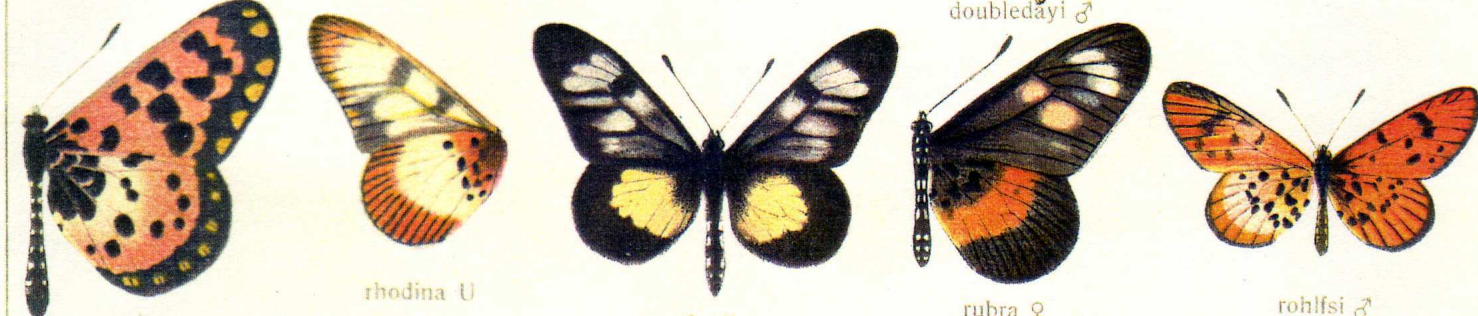
unimaculata eugenia ♀ aubyni ♂ mansya ♂ rangatana latimaculata



grosvenori ♂ rhodesiana ♂ ella ♂



aureola ♂ wigginsi doubledayi ♂ disjuncta



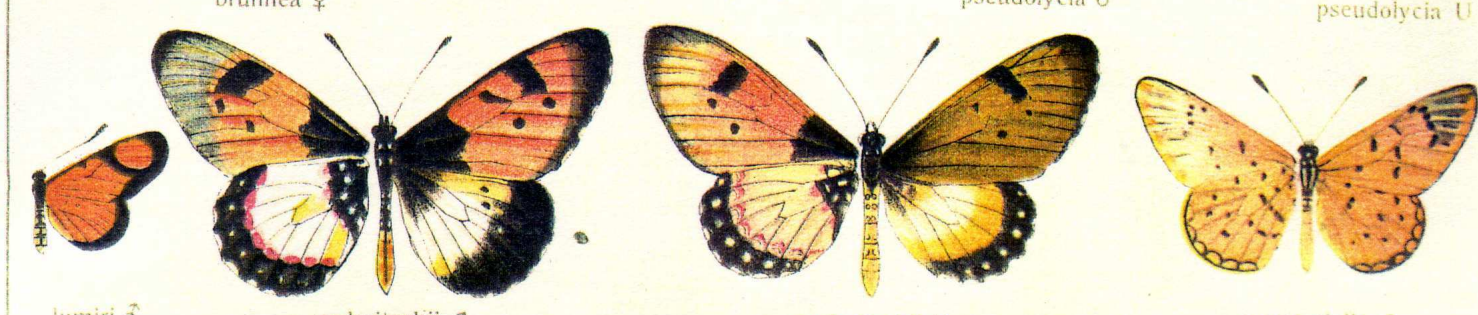
oscar rhodina U rhodina rubra ♀ rohlfsi ♂



lofua kakana cerita alberta translucida ♂ translucida ♀



brunnea ♀ astrigera ♂ pseudolydia ♂ pseudolydia U



lumiri ♂ welwitschii ♂ welwitschii ♀ equatorialis ♂